



State Water Resources Control Board  
 Temporary Urgency Change Orders (12/27/2023 & 6/6/2024)  
 Russian River Hydrologic & Water Quality Report  
 June 14, 2024 - June 20, 2024

Prepared as a requirement of the Orders approving Sonoma Water's Petition for Temporary Urgency Change in Permits 12947A, 12949, 12950, and 16596 (Applications 12919A, 15736, 15737, and 19351).

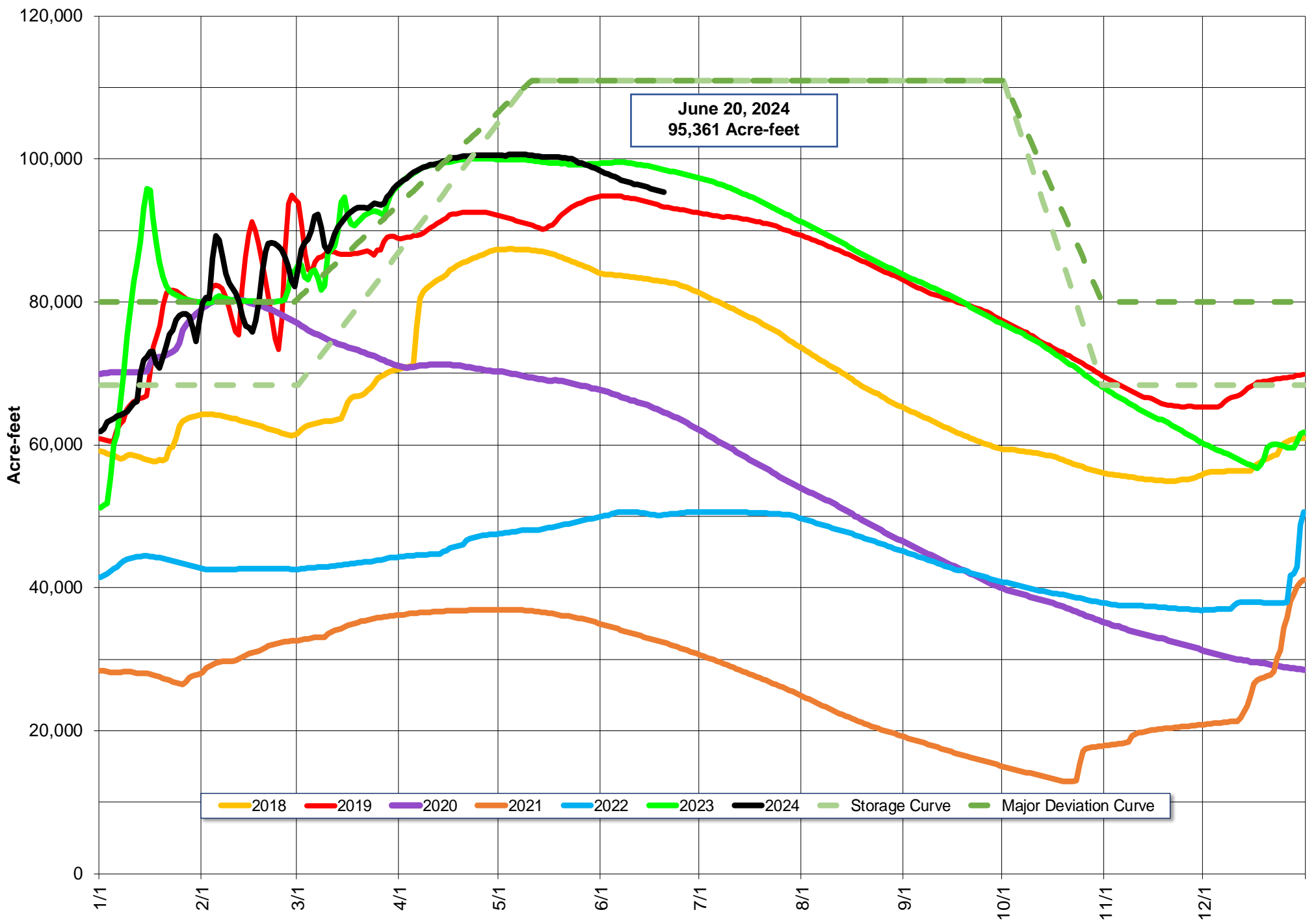
**Instream Flow Requirements as of June 20, 2024**

Basis	Reach	Instantaneous (cfs)	5-day Average (cfs)
Modified Per Order: Normal Condition	Upper Russian River	<b>110</b>	<b>125</b>
D-1610: Normal Condition	Dry Creek	<b>80</b>	-
Modified Per Order: Normal Condition	Lower Russian River	<b>60</b>	<b>70</b>

Upper and Lower Russian River are based on criteria as established in the Order issued 6/6/2024.

**Lake Mendocino**

**Lake Mendocino Storage 2018 - 2024 and Storage Curve**



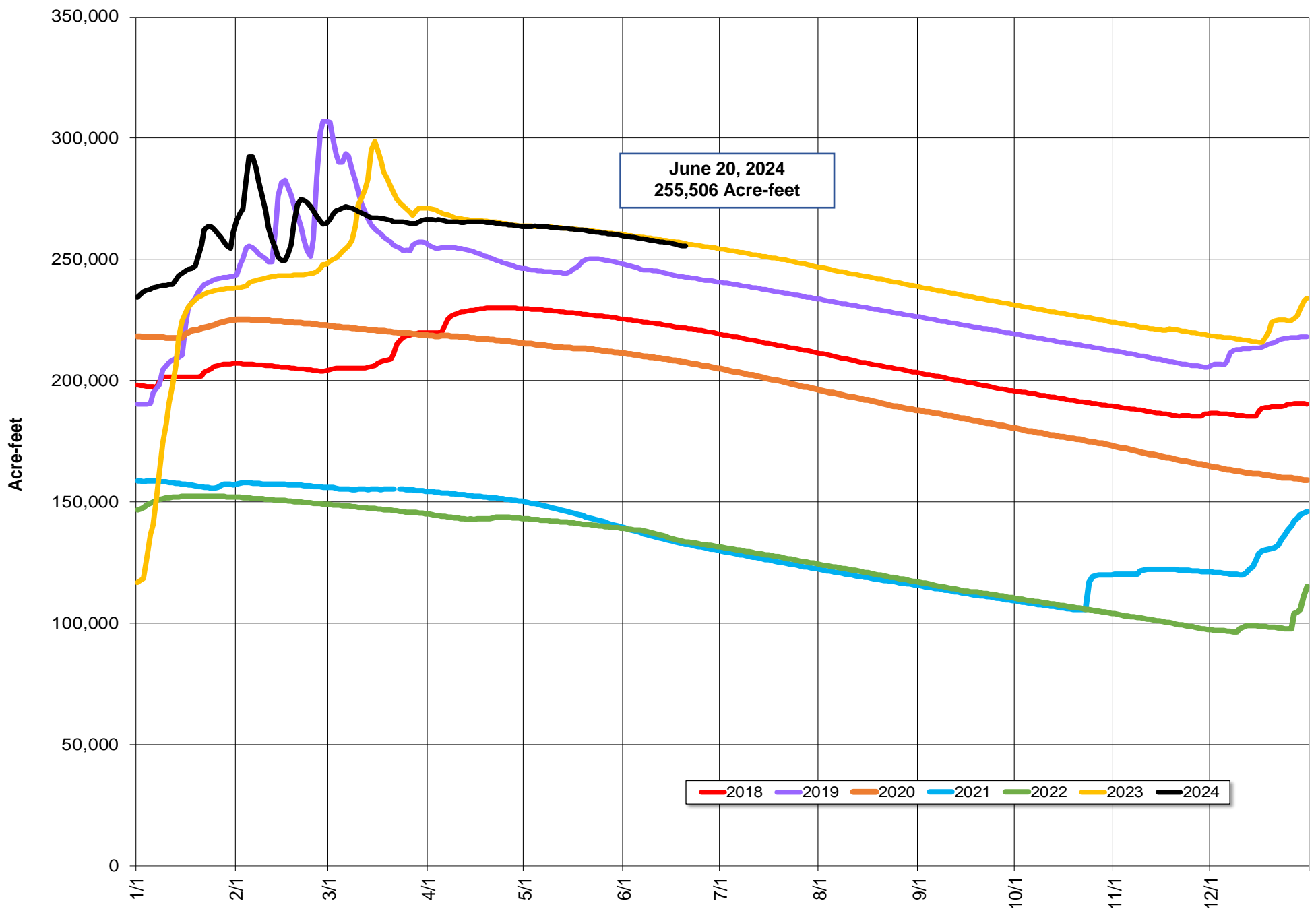
Storage (acre-feet)	June 20, 2024	<b>95,361</b>	
Change in Storage (acre-feet)	Last 30 days	<b>-4,820</b>	<b>Average Daily Rate</b>
	Last 7 days	<b>-798</b>	<b>-114</b>
Daily Inflow (cfs)	Last 7 days	Min	<b>67</b>
		Max	<b>126</b>
		Mean	<b>91</b>
Release (cfs)	Last 7 days	Min	<b>131</b>
		Max	<b>144</b>
		Mean	<b>138</b>

# Lake Sonoma



Todd Schram, February 10, 2024

## Lake Sonoma Storage 2018-2024



Storage (acre-feet)	June 20, 2024	<b>255,506</b>	
		Total	Average Daily Rate
Change in Storage (acre-feet)	Last 30 days	<b>-6,211</b>	<b>-207</b>
	Last 7 days	<b>-1,714</b>	<b>-245</b>
Daily Inflow (cfs)	Last 7 days	Min	<b>0</b>
		Max	<b>27</b>
		Mean	<b>11</b>
Release (cfs)	Last 7 days	Min	<b>98</b>
		Max	<b>100</b>
		Mean	<b>99</b>

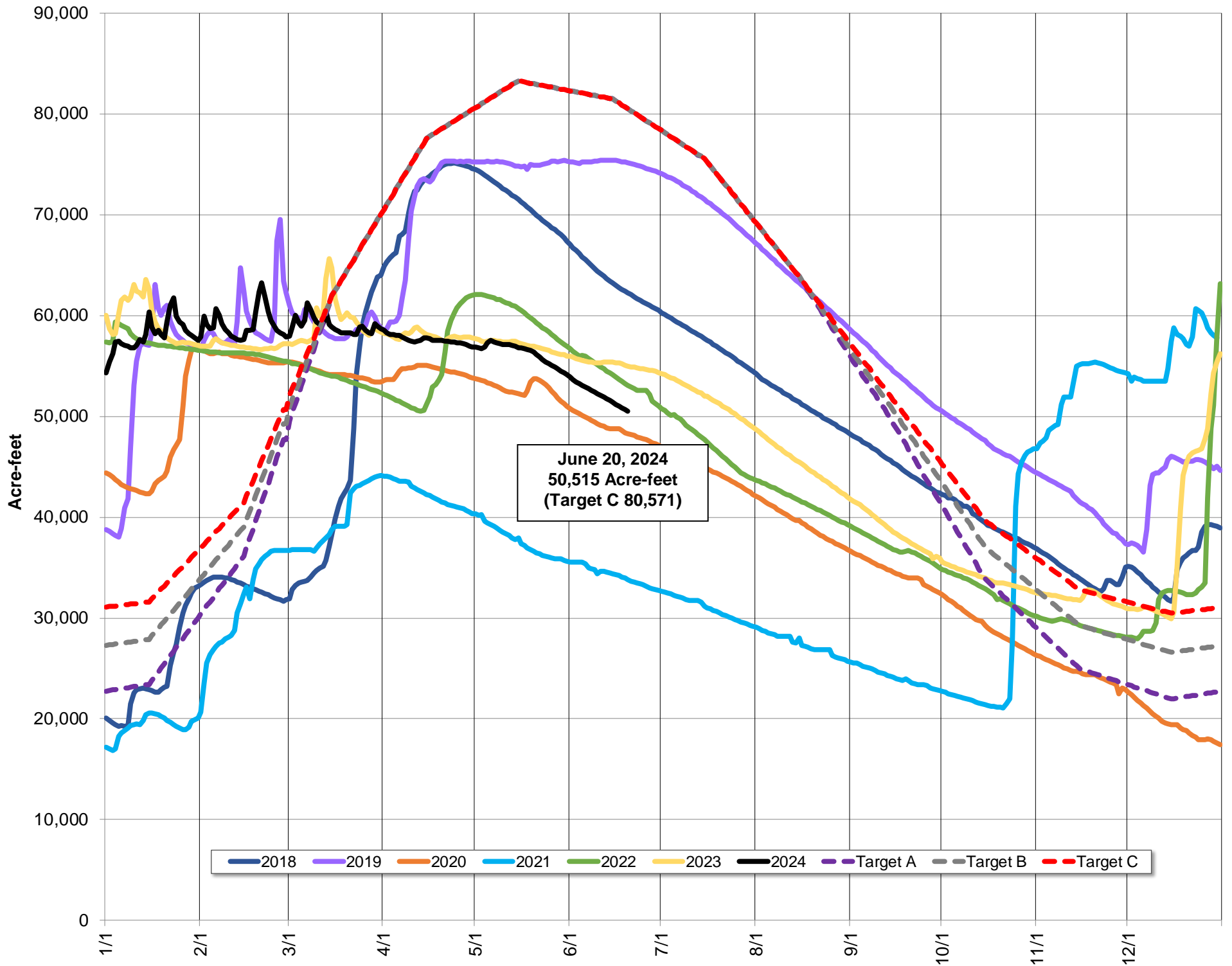
# Potter Valley Project

PVP Diversion (cfs)	June 20, 2024	100
---------------------	---------------	-----

Parameter	Date Range	Cumulative	Daily Average
Inflow* (acre-feet)	October 1, 2023 - June 20, 2024	483,975	1,833
	Last 7 days	768	110

\*Inflow calculation based on criteria established in D1610

### Lake Pillsbury Storage 2018 - 2024 and Target Storage Scenarios

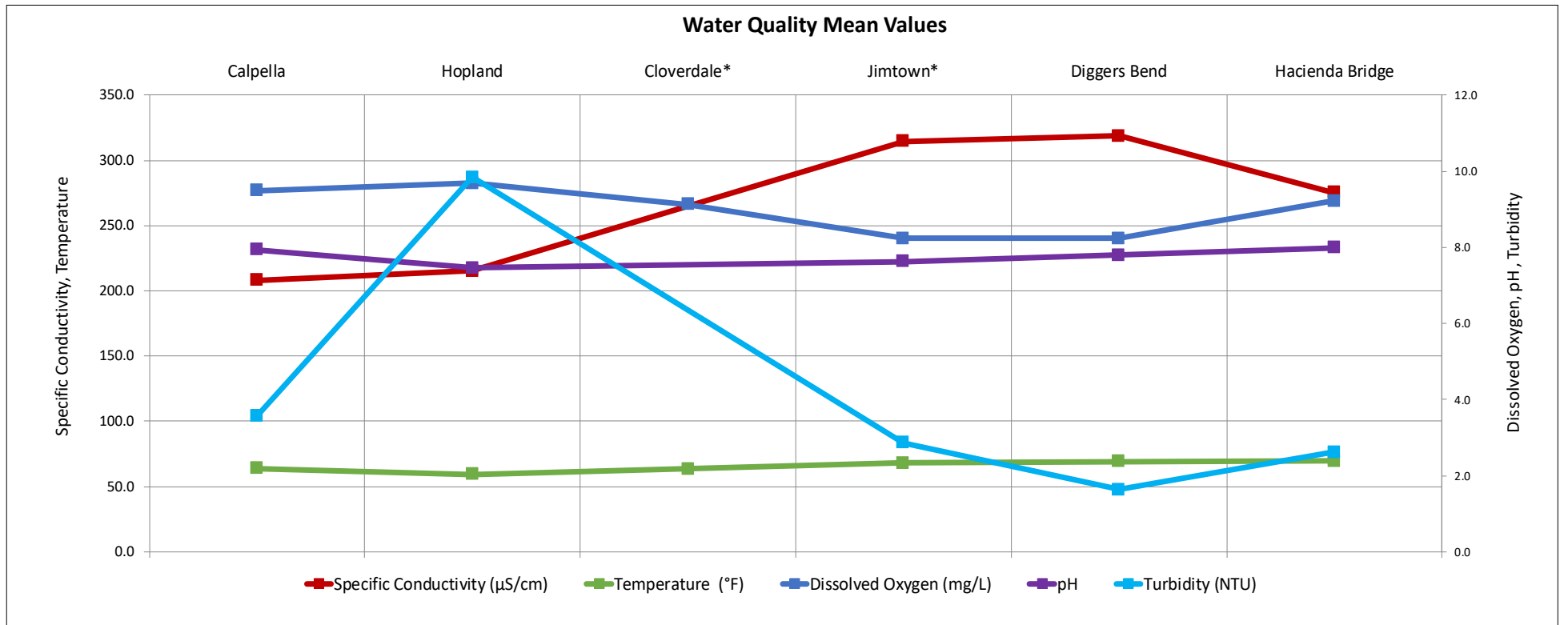


June 20, 2024  
50,515 Acre-feet  
(Target C 80,571)

## Russian River Flows (June 14, 2024 - June 20, 2024)

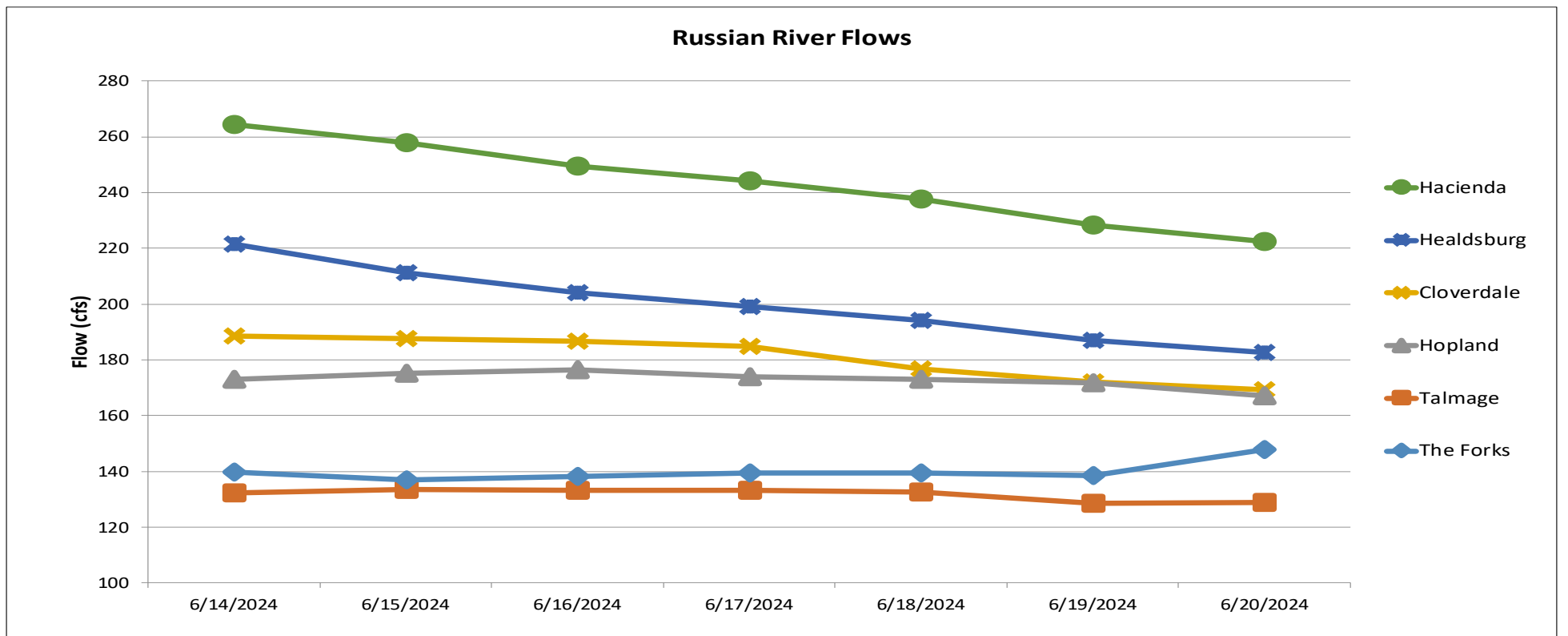
Parameter		Calpella	Hopland	Cloverdale*	Jimtown*	Diggers Bend	River Diversion System at Mirabel*	Hacienda Bridge	Johnsons Beach*
		USGS 11461500	USGS 11462500	USGS 11463000	USGS 11463682	USGS 11463980	SCWA	USGS 11467000	SCWA
Temperature (°F)	Min	60.6	56.8	60.4	64.4	65.3		66.9	
	Max	68.5	62.4	67.6	72.3	73.2		72.1	
	Mean	64.0	59.2	63.4	68.0	69.1		69.6	
Specific Conductivity (µS/cm)	Min	203.0	212.0		312.0	317.0		271.0	
	Max	213.0	218.0		317.0	321.0		279.0	
	Mean	208.1	215.1		314.8	318.8		275.2	
Dissolved Oxygen (mg/L)	Min	8.9	8.9	8.4	7.2	6.9		8.2	
	Max	10.3	10.8	10.1	9.8	9.7		10.4	
	Mean	9.5	9.7	9.1	8.2	8.2		9.2	
Dissolved Oxygen (% Saturation)	Min	95.4	87.5	87.2	76.8	75.3		89.6	
	Max	108.6	109.4	109.6	111.0	111.0		119.0	
	Mean	99.8	96.4	95.5	90.8	91.7		103.3	
pH	Min	7.8	7.4		7.5	7.6		7.8	
	Max	8.2	7.6		7.8	8.0		8.2	
	Mean	7.9	7.5		7.6	7.8		8.0	
Turbidity (NTU)	Min	2.6	8.8		1.7	0.8		1.7	
	Max	5.0	10.9		4.8	2.9		4.2	
	Mean	3.6	9.8		2.9	1.6		2.6	

\*Station operated seasonally



Gage	24-hr Average Flow (cfs)						
	Jun 14, 2024	Jun 15, 2024	Jun 16, 2024	Jun 17, 2024	Jun 18, 2024	Jun 19, 2024	Jun 20, 2024
The Forks*	140	137	138	139	139	139	148
Talmage USGS 11462080	132	134	133	133	133	128	129
Hopland USGS 11462500	173	175	176	174	173	172	167
Cloverdale USGS 11463000	189	187	187	185	177	172	169
Healdsburg USGS 11464000	222	211	204	199	194	187	183
Hacienda USGS 11467000	264	258	250	244	238	228	222

\*West Fork(USGS 11461000) + East Fork (Coyote Valley Dam Release)

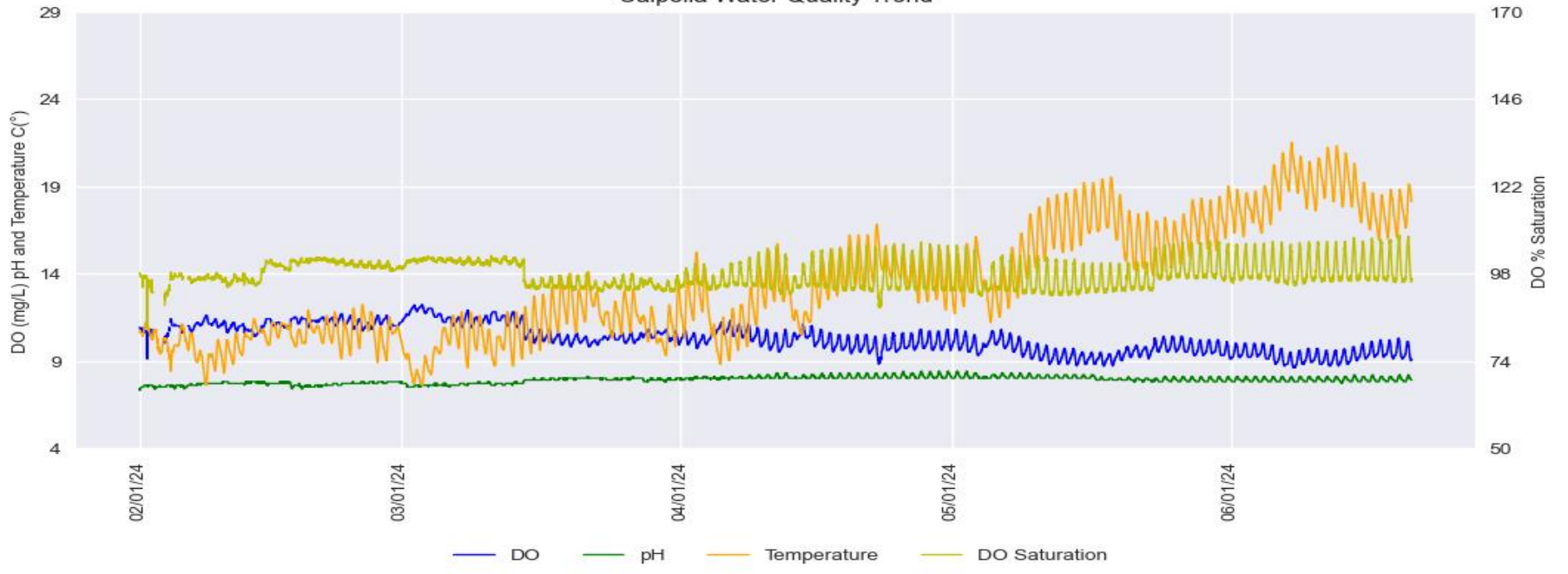


Russian River Water Quality February 1, 2024 – June 20, 2024

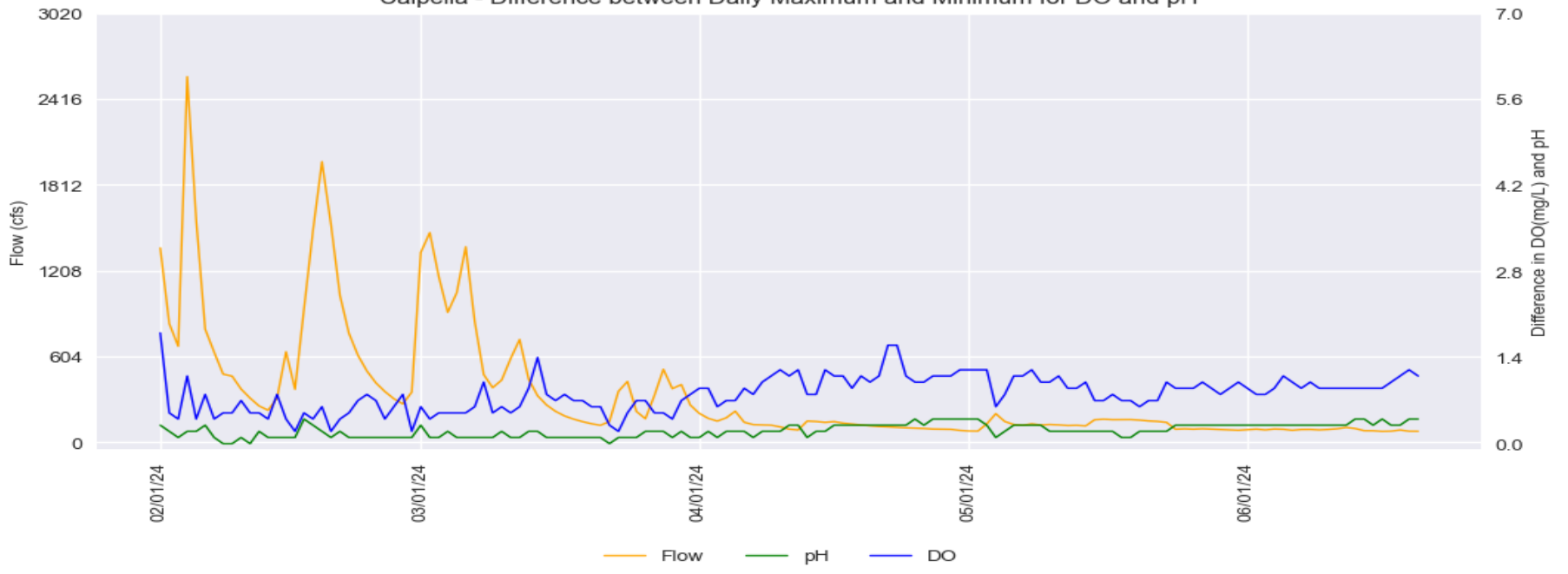
Provisional Data Subject to Revision

**Calpella**

Calpella Water Quality Trend

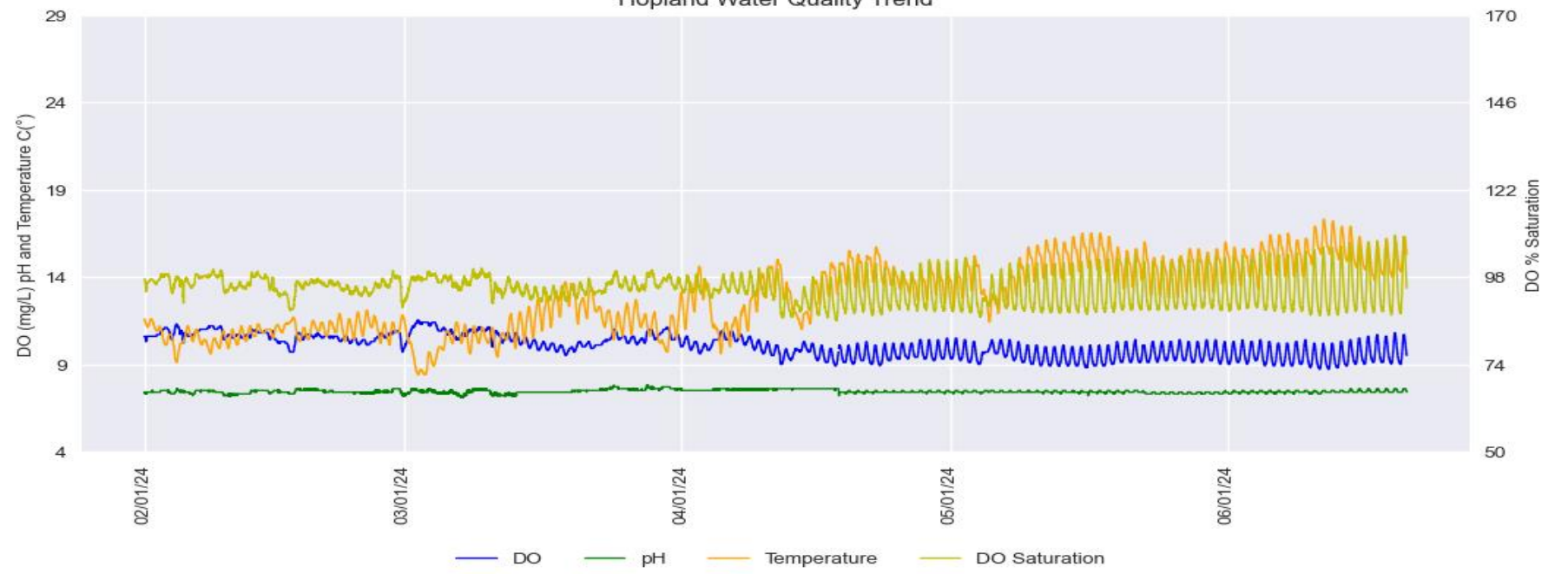


Calpella - Difference between Daily Maximum and Minimum for DO and pH

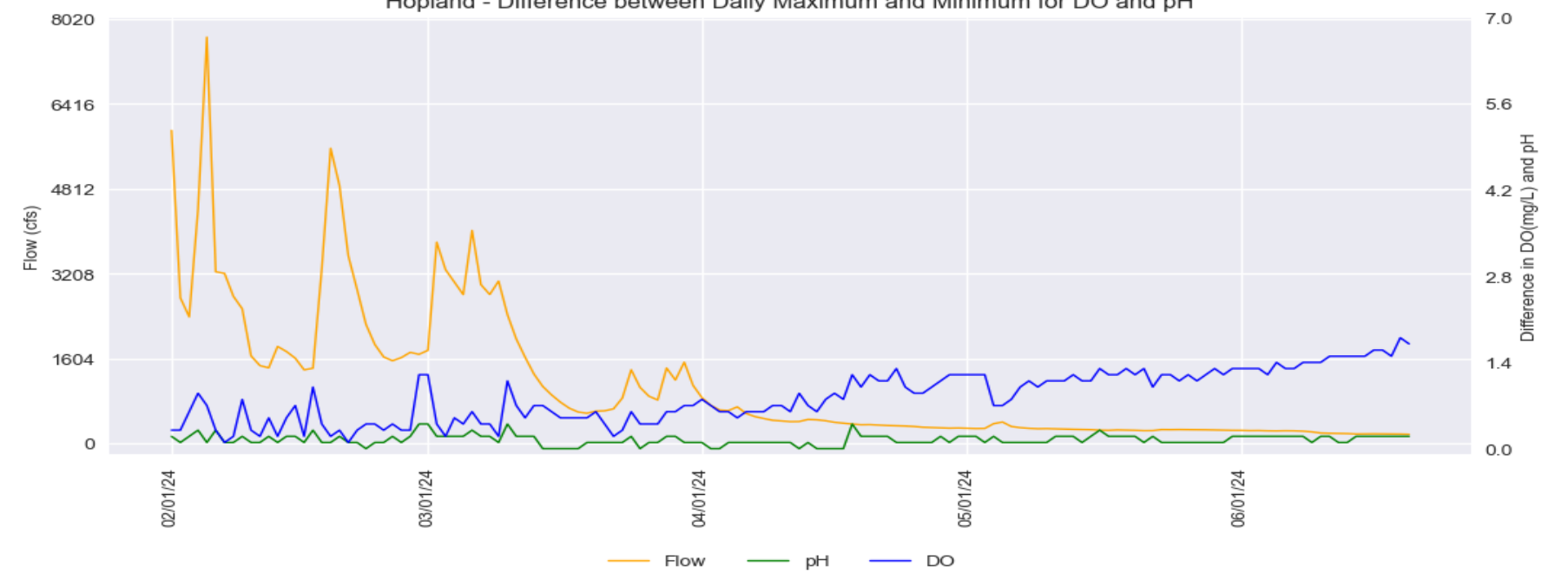


**Hopland**

Hopland Water Quality Trend



Hopland - Difference between Daily Maximum and Minimum for DO and pH

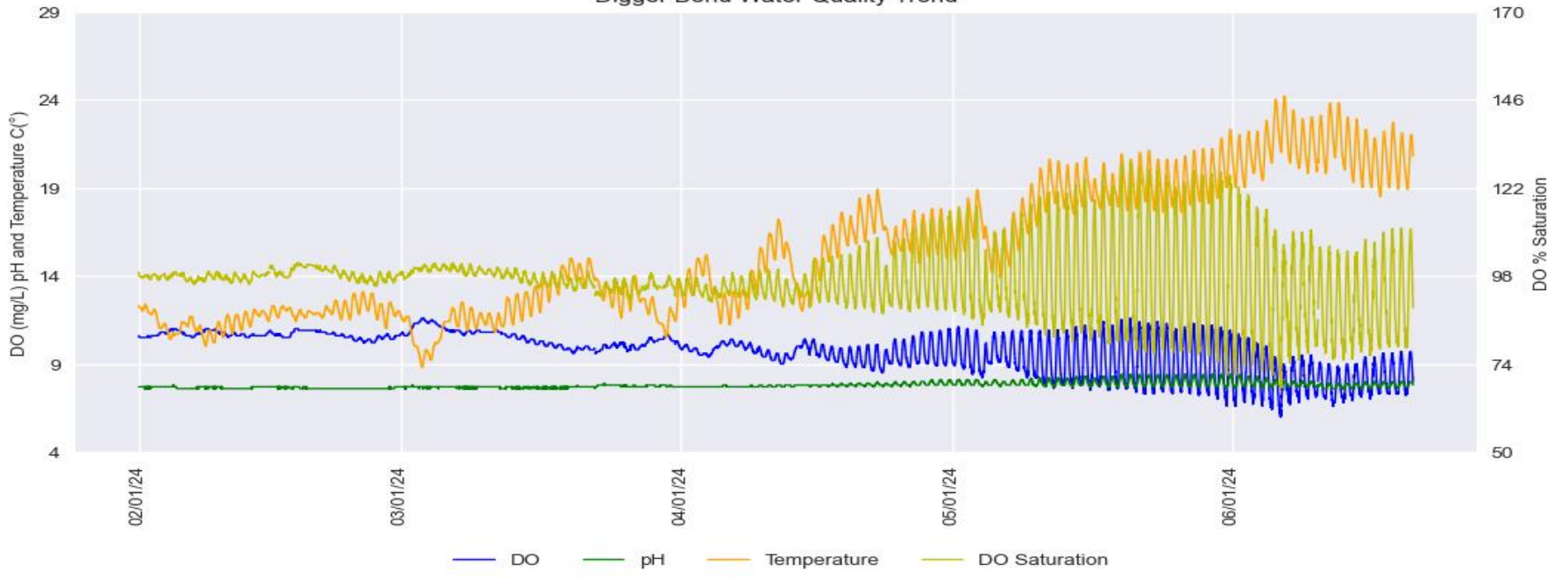


Russian River Water Quality February 1, 2024 – June 20, 2024

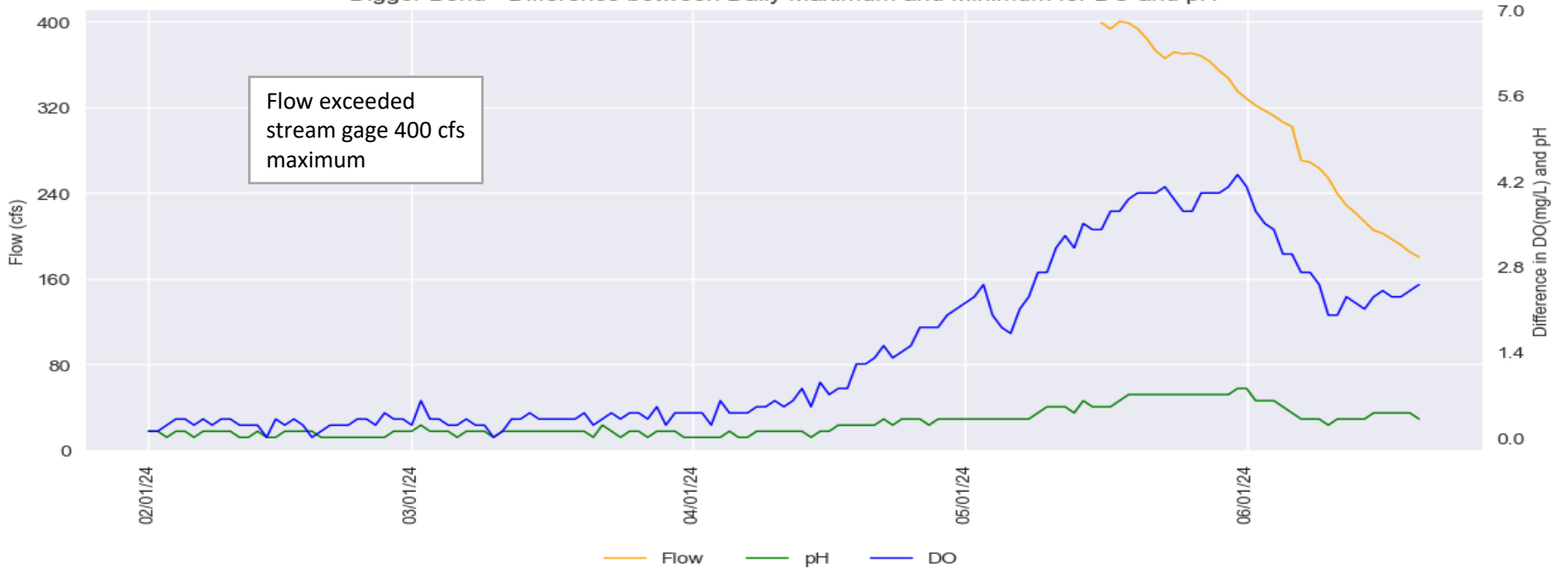
Provisional Data Subject to Revision

**Digger Bend**

Digger Bend Water Quality Trend

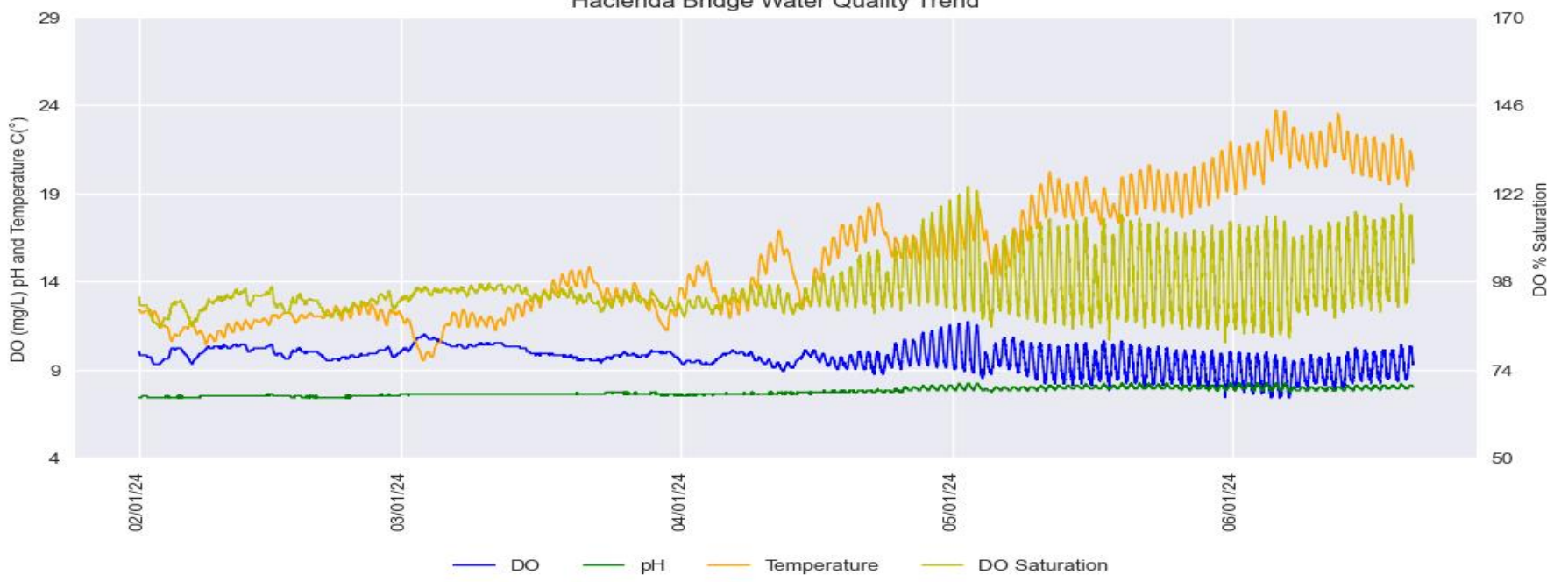


Digger Bend - Difference between Daily Maximum and Minimum for DO and pH

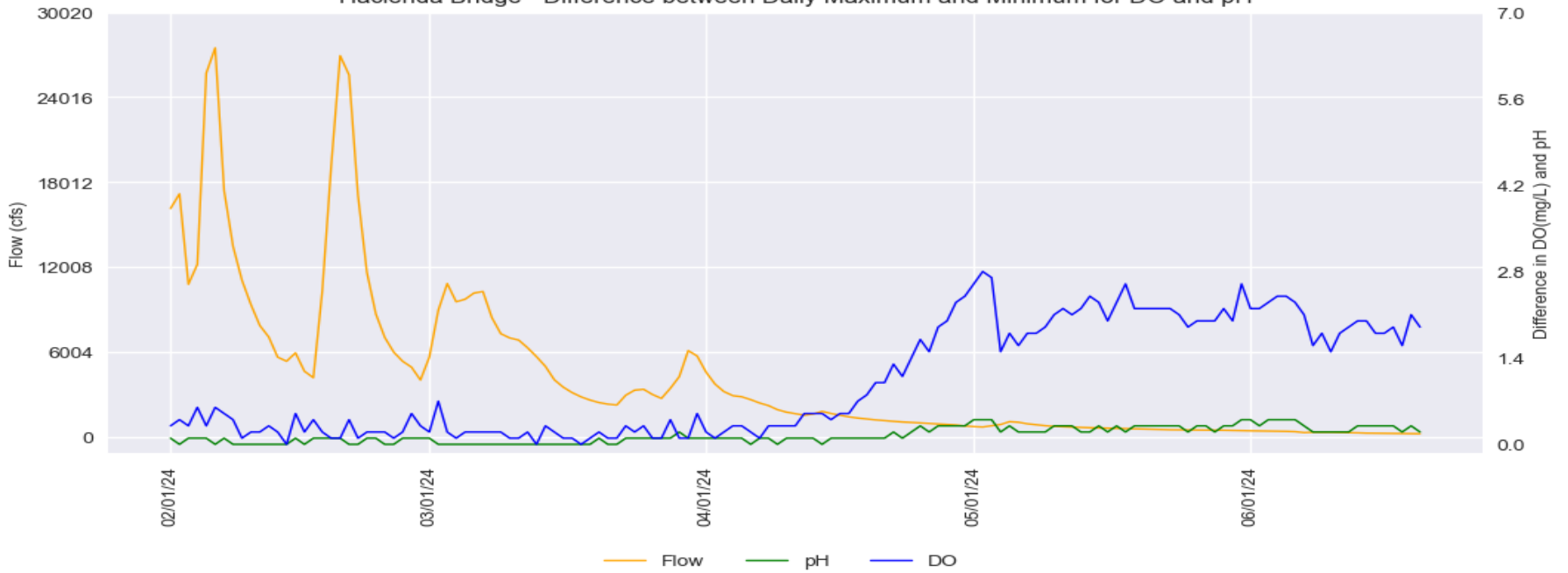


**Hacienda Bridge**

Hacienda Bridge Water Quality Trend



Hacienda Bridge - Difference between Daily Maximum and Minimum for DO and pH

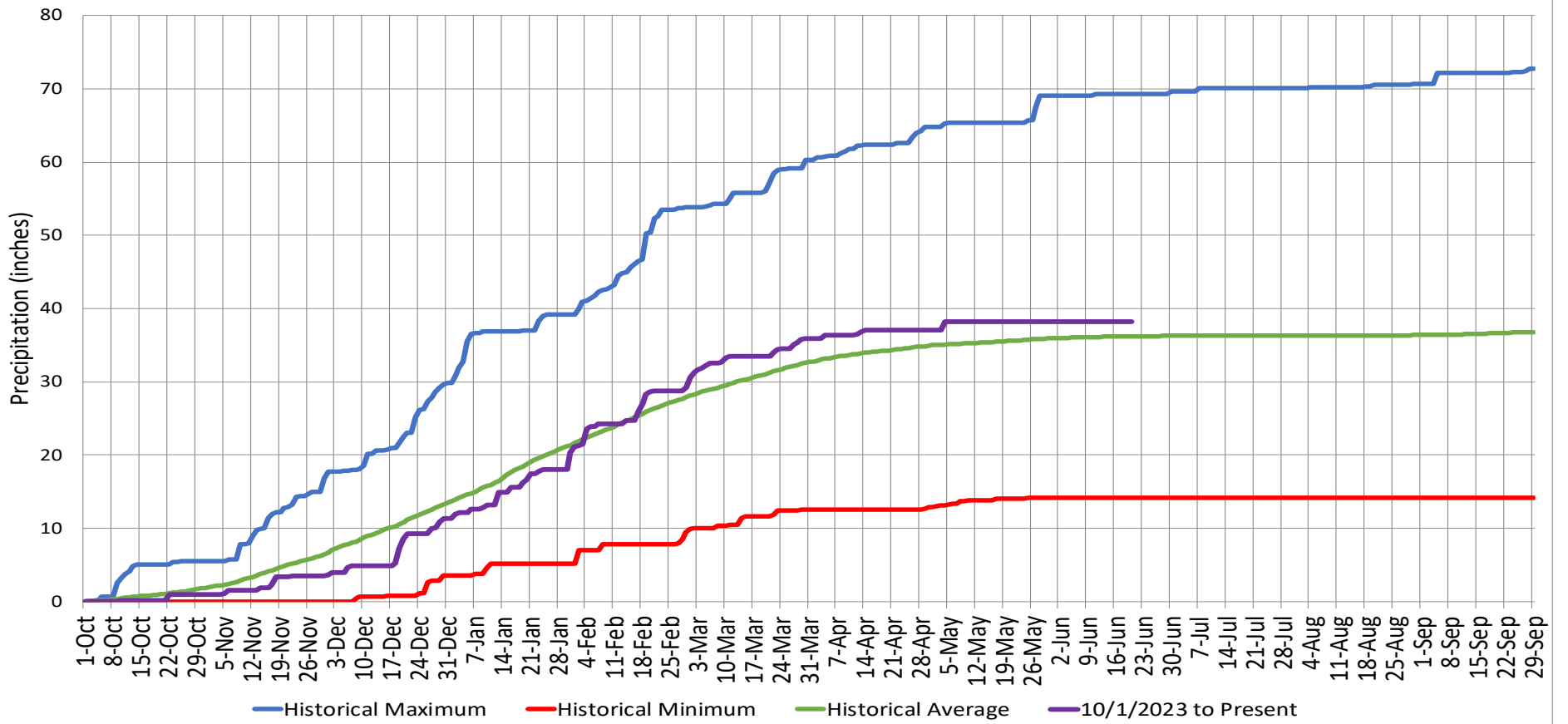


# Precipitation

Ukiah Municipal Airport (WBAN: 72590523275 (KUKI))

Date Range	Cumulative (inches)
Oct 1, 2023 - Jun 20, 2024	<b>38.22</b>
Last 7 Days*	<b>0.00</b>

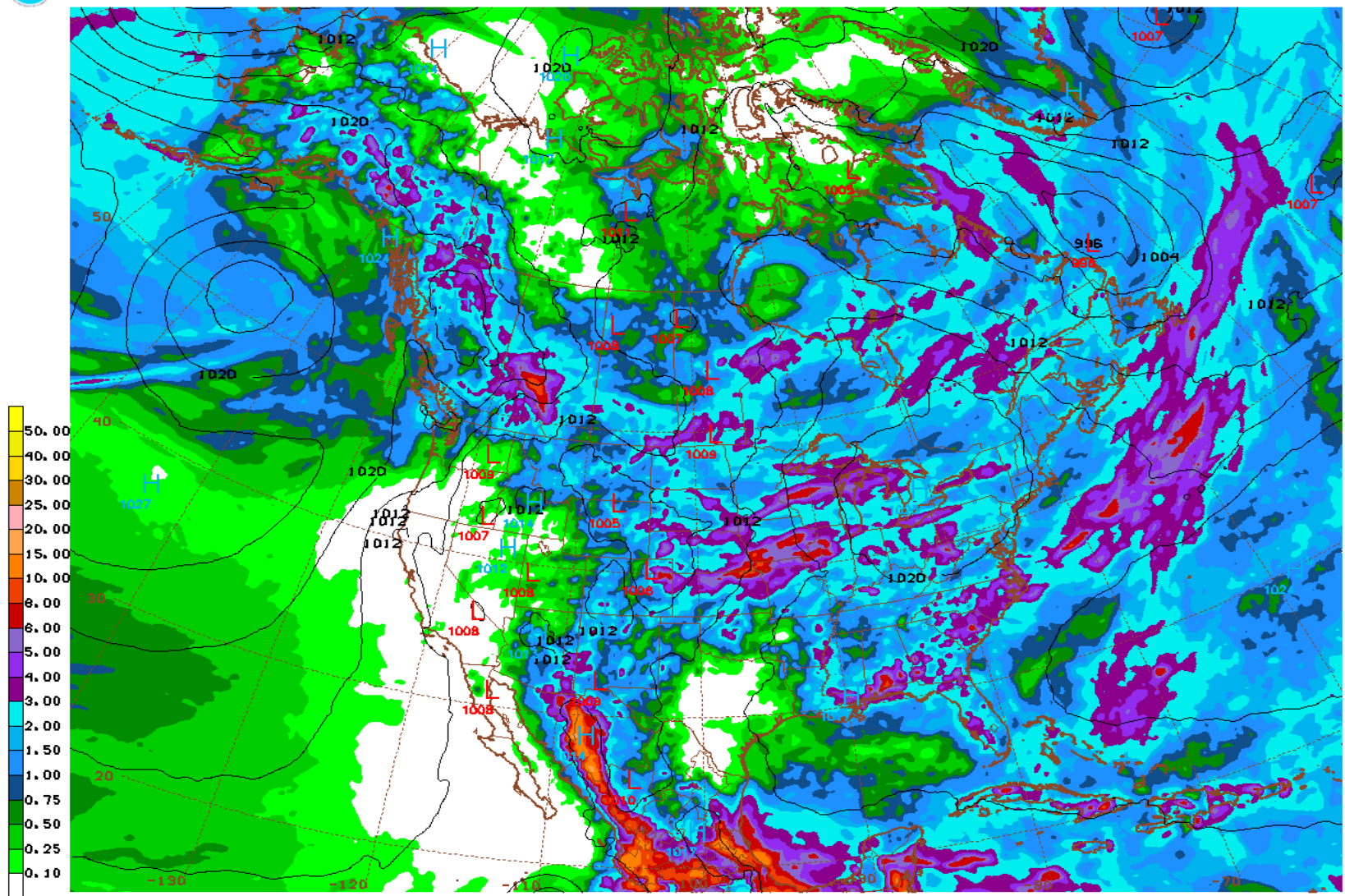
Cumulative Precipitation Comparison of Current Year versus Historic Record



## Global Forecast System Model 16-day Cumulative Precipitation Forecast



6FS 06/24/24 12UTC 384HR FCST VALID WED 07/10/24 12UTC NOAA/NWS/NCEP



6FS WED 240710/1200V384 EMSL (4MB), 384HR ACCUMULATED PRECIP (IN)

Date Range  
Jun 24 - Jul 10, 2024

Forecasted Cumulative (inches)  
**0.00**